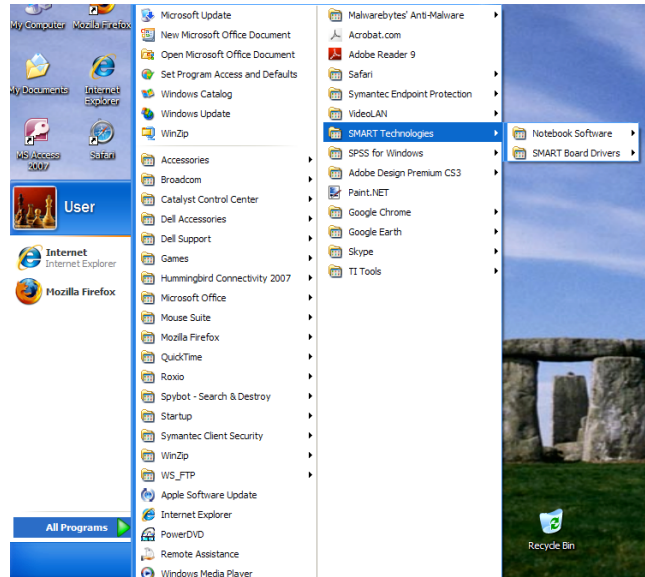


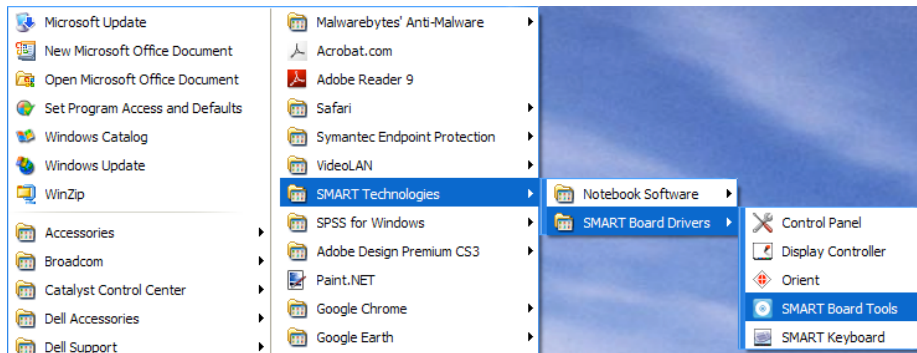
Locating the SMART Board Toolbar

Are you trying to write on the SmartBoard with a pen tool and it is not working? The SmartBoard tools do not always load when the computer starts up. If you need ANY of the SmartBoard features, do the following simple steps:

- > Click on Start
- > Click on All Programs
- > Click on SMART Technologies



- > Click on SMART Board Driver> Select SMART Board Tools



- > Toolbar will appear on the left side of the screen

